

## Print your medical imaging in HD colour with integrated DICOM A4 / A3 printers

**OKI is a leader in printing innovation, providing organisations with High Definition colour printing devices based on digital LED technology, and now our sophisticated range of printers integrate seamlessly with your clinical systems using DICOM.**

### **A first in medical imaging and printing**

This is a first in digital printer technology, combining the cost effectiveness and high quality output of an LED printer with embedded DICOM software, allowing you to print directly from medical equipment without the use of conversion software or external print servers. You no longer need to settle for expensive printing on specialist media and devices.

With the Pro9431 DMe you can now print your medical imaging cost effectively on standard media formats in vibrant, HD colour and in sizes up to A3+. From x-rays (eg dental, veterinary, hospital, clinic) to nuclear medicine, scans (eg MRI, CT) and ultrasounds, these images can now be easily printed for your own non-diagnostic use or to provide a copy for your patients and clients to take away with them.

### **Reduce your costs and improve your printing**

The Pro9431 DMe is not only perfect for your medical imaging printing, it can also be used for your standard office printing, from patient letters and forms to medical reports, allowing you to choose one machine that answers all the needs of your organisation, cutting down on the number of devices and consumables used.

The Pro9431 DMe is based on our existing, award winning printers, offering the same reliability, ease of use, low total cost of ownership, media flexibility and high quality output, with the additional benefit of embedded DICOM technology. Through system integration, the use of energy efficient equipment, standard printer consumables and a three year on-site warranty, the Pro9431 DMe offers considerable savings for your day-to-day printing needs.

### **See it clearer with OKI**

Talking directly with your medical imaging equipment, the Pro9431 DMe presents many opportunities for printing high quality, non-diagnostic images in HD mono and colour on a wide range of media. The significantly reduced costs of printing using the Pro9431 DMe, compared with traditional DICOM printing technologies, allows medical establishments to change their approach to printing.

Imagine the possibilities; print MRI scans in colour, offer mothers-to-be A4 or A3 ultrasound scans or keep sharp and clear non-diagnostic images in patients' records, and all at a very low cost. In fact, the same cost of printing as standard office documents.

### **Benefits at a Glance**

- Fully integrated DICOM print server
- Up to 5 simultaneous imaging equipment connections
- Recommended usage - Nuclear medicine, ultrasound, MRI/CT scans, x-rays
- High quality non-diagnostic mono and colour printing of medical images
- No additional external hardware or software required
- Handles media from A6 to A3+ and A3 wide 1200mm banners, from 64 to 300gsm
- Three year on-site warranty (product to be registered within 30 days of purchase)

# Pro9431 DME - Colour and Mono DICOM Embedded Printer (46192604)

## OVERVIEW

<b>Description</b>	Initially designed for graphic application, the Pro9431 DME has been heavily optimized for DICOM reproduction needs, resulting in very high quality output for all medical imaging centers needs.
<b>Imaging Technology</b>	CMYK toner based engine with tandem technology. Light sources are LED arrays with multi-level capability
<b>Network</b>	10/100/1000 Base TX (RJ45) interface
<b>Product Order Number</b>	46629502

## GENERAL FEATURES

<b>Print Format - Paper weight</b>	A4, A3, A3Nobi, A3Nobi banners up to 1.3m - 52 to 360gsm
<b>Dimensions (HxWxD)</b>	640 x 699 x 625mm
<b>Weight</b>	97.6kg

## DICOM SERVER FEATURES

<b>Capability</b>	DICOM 3.0 Print SCP, Store to Print (US, Ophthalmic, Endoscopy)
<b>Maximum Number of AET</b>	25
<b>Modalities Connection</b>	No restriction (see DCS)
<b>Dicom Server interface</b>	Integrated web server
<b>Log</b>	Extended log capability in case of troubleshooting
<b>Dicom Optional Features</b>	LUT: identity, reverse, lin-od; True size printing; Color
<b>Image Generation</b>	Specific color rendering optimized for medical images
<b>Graphical Header</b>	Capability to add a custom graphical header on each printout

## AET DEPENDENT FEATURES

<b>AET Name</b>	Print SCP Application Entity Title (AET)
<b>Print Destination</b>	Allows to print DICOM Images on other non DICOM OKI printers
<b>Printer Tray</b>	Use preferred paper for your medical prints
<b>Copy</b>	Send one, print what you need
<b>Page Format</b>	Force output format to desired size
<b>Replace Header by Logo</b>	Enhance your communication on the printouts
<b>Header</b>	Enter text that will print on top of page or select Logo
<b>Footer</b>	Edit the text on page bottom
<b>Booklet Print Mode</b>	Tells the Server to make a booklet with your Images
<b>Border Density</b>	Value from Black, White or Client
<b>Empty image Density</b>	Value from Black, White or Client
<b>Image Background</b>	Fill or not the unused reserved space with black
<b>Polarity</b>	Force image polarity inversion if needed
<b>Smoothing Filter</b>	Activate and adjust the level of sharpen
<b>Layout Format</b>	Select your desired layout when using Store to Print Protocol
<b>Black &amp; White Mode</b>	Select your preferred rendering of grey level images
<b>Color Mode</b>	Select your preferred rendering of color images
<b>Contrast</b>	Add or remove contrast on the printouts
<b>Brightness</b>	Add or remove brightness on the printouts
<b>X Y Scale</b>	Rescale your images
<b>X Y Offset</b>	Change the position of your images
<b>Black &amp; CMY Gamma</b>	For fine tuning of your image rendering



**Consumables Information:** For the protection of your printer, and in order to ensure that you benefit from its full functionality, this model has been designed to operate only with genuine OKI toner cartridges. These can be identified by the OKI trademark. Any other toner cartridge may not operate at all, even if it is described as "compatible", and if it does work, your printer's performance and print quality may be degraded.

\*Toner: Number of A4 pages @ ISO coverage.  
 Medical printing strongly alter these values.  
 \*\*Drum: Average number of A4 pages printed.

## CONSUMABLES (ORDER NUMBERS)

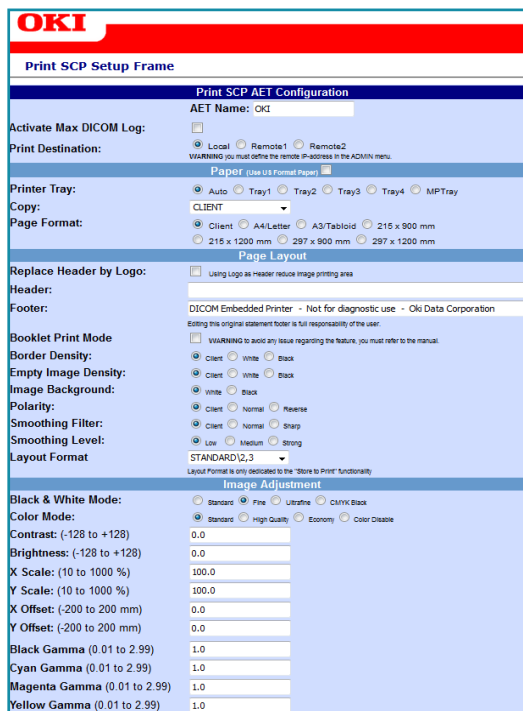
<b>Toner cartridge 51k pages*</b>	Black: 45536556
<b>Toner cartridges 42k pages*</b>	Cyan: 45536555; Magenta: 45536554; Yellow: 45536553
<b>Image drum** 40k pages</b>	Cyan: 45103721; Magenta: 45103720; Yellow: 45103719; Black: 45103722
<b>Transfer Belt 150k pages</b>	45531213
<b>Fuser Unit 150k pages</b>	45531113
<b>Waste Toner Box 40k pages</b>	4551503

## MISCELLANEOUS

<b>Maximum Specifications</b>	300 000 pages/month, 50 ppm, ProQ4800 resolution
<b>Office Usage</b>	Please refer to Standard Pro9431 Specs sheet

## DICOM INTERFACE

<b>On Embedded Web Server</b>	Full configuration of the server features, log viewing
-------------------------------	--



## ACCESSORIES (ORDER NUMBERS)

<b>2nd/3rd Paper Tray</b>	45530703
<b>Paper Tray with Castor</b>	45530903
<b>High Capacity Feeder</b>	45530803

**OKI EUROPE LTD.**  
 Blays House, Wick Road  
 Egham, TW20 0HJ  
 United Kingdom  
 T +44(0) 20 8219 2190  
 F +44(0) 20 8219 2199  
[WWW.OKIEXECUTIVESERIES.COM](http://WWW.OKIEXECUTIVESERIES.COM)

**OKI**  
*Open up your dreams*